

No need the old workers , welding doesn't deform ,Wobble welding technology

HAND-HELD LASER WELDING MACHINE 1500W



1

Machine Introduction

Hand-held laser welding machine, using the latest generation of fiber laser, equipped with self-developed wobble welding joints, fills in the gap of hand-held welding in laser equipment industry. It has the advantages of simple operation, beautiful welding seam, fast welding speed and no consumables. It can weld thin stainless steel plate, iron plate, galvanized sheet and other metal materials. It can replace the traditional argon arc welding and electric welding technology perfectly. Handheld laser welding machine can be widely used in kitchen and toilet, staircase elevator, rack, oven, stainless steel door and window guardrail, distribution box, stainless steel home and other industries complicated and irregular welding process.

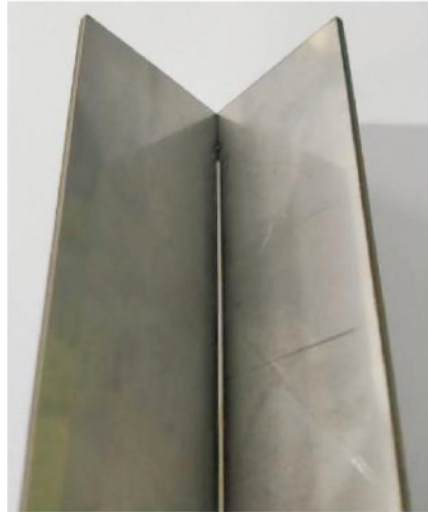
2

Product Advantage

The welding seam is smooth and beautiful, the welding workpiece has no deformation, no welding scar, welding firmly reduces the follow-up grinding process, saves time and cost.



Welds free scar



Beautiful seam

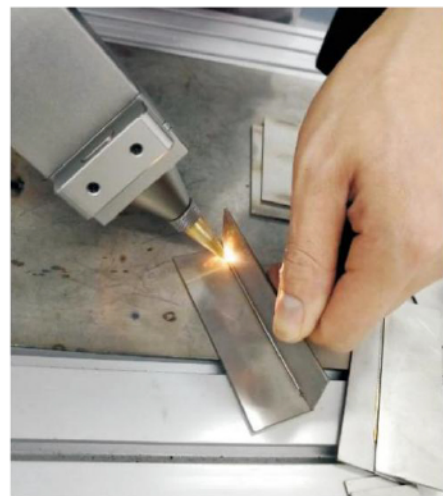


Workpiece does not deform

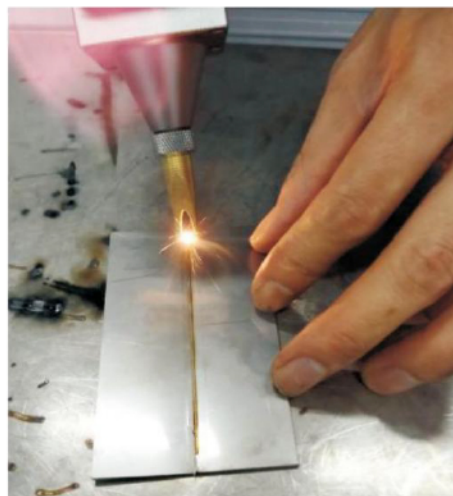
3

Product Advantage

Simple operation, simple training can be operated, without teachers can also weld and store beautiful products.



Angle weld / stand weld



Tailor welded



Overlap welding

4

Product Advantage

Wobble welding joint, swing welding mode, adjustable spot height and strong fault tolerance make up for the weakness of laser welding spot, expand the processing tolerance range and welding width, and get better weld forming.



Overall appearance



Accessories

5

Product Advantage

1. The welding speed is 2-10 times faster than the traditional welding speed, and a machine saves at least two welders a year.
2. Laser welding consumables less, long life, safer, more environmentally friendly.



Laser welding

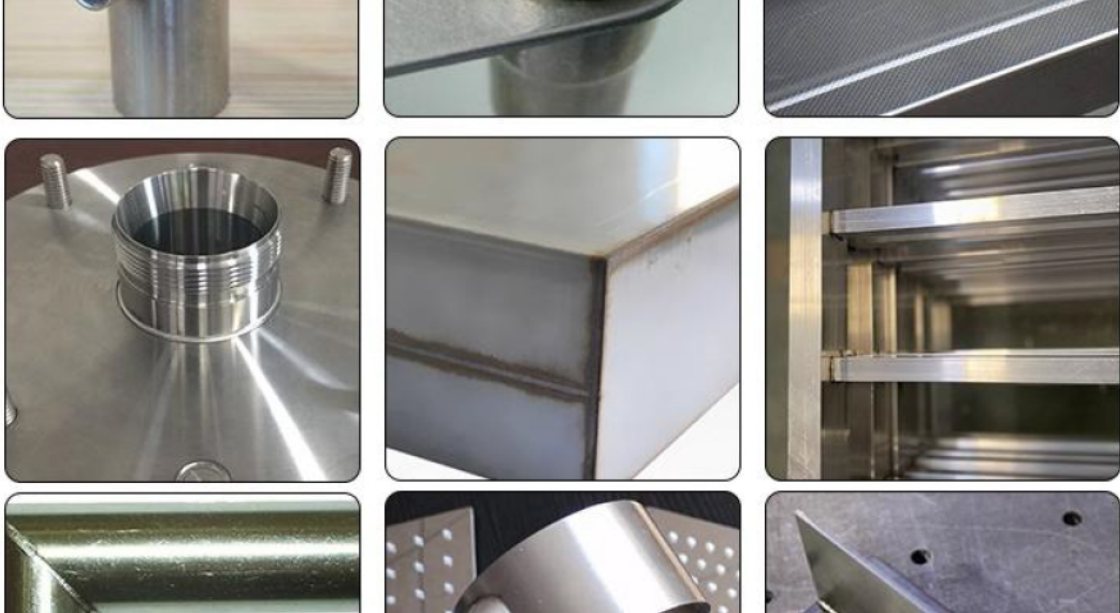


Traditional Welding

No	Item	Technical Parameters
1	Machine name	Hand Held Fiber Laser Welding Machine
2	Laser Power	1500W
3	Laser wavelength	1080NW
4	Fiber Length	Standard 10M / Max. 15M
5	Working Way	Continuous/Modulation
6	Speed	0-120mm/s
7	Water cooling	Industrial constant temperature water tank
8	Working temperature	15~35°C
9	Working humidity	< 70% No condensation
10	Welding thickness range	0.5-3mm
11	Welding gap	≤0.5mm
12	Power	AV380V
13	System & Gun	Au3tech
14	Laser Source	Raycus

Penetration depth Power	Stainless steel	Carbon steel	Zinc Steel
1500W	0.5-3mm	0.5-3mm	0.5-2.5mm

Industry applied



Handheld laser welding machine can be widely used in kitchen and toilet, staircase elevator, rack, oven, stainless steel door and window guardrail, distribution box, stainless steel home and other industries complicated and irregular welding process.

